

# Model 4525-14000 Gate Monitor



Ludlum Measurements, Inc.

**Part No.: 48-3607**  
Shown with optional  
detector stands



**INDICATED USE:** Low level radiation monitoring  
**SYSTEM OPERATION:** Automatic monitoring of vehicles that  
pass between the detectors

**COMPUTER SPECIFICATIONS:**

- Intel Celeron D-2.53 GH Processor
- Windows XP Professional
- 512 MB RAM
- 80 GB Hard Drive
- LCD-PC, 17" touchscreen monitor
- Mini USB keyboard with built in touchpad
- DVD  $\pm$ RW Drive
- Supports up to 4 lanes
- Up to 6 detectors per lane
- Data logging with automatic daily back-up
- Ethernet network capability
- Uninterruptible power supply
- Radiation profile
- Weight 40 pounds (18.1kg)
- Dimensions: 22" (55.9 cm) W  
38.3" (97.3 cm) H  
18.7" (47.5 cm) D

- 8 relays built-in for options
- Inkjet photo printer
- 100 millisecond samples
- Remote HV adjust
- Vehicle counter
- Battery back-up
- Supplied with dual presence  
and speed sensors



System Computer

**ALARM TYPES:**

1. Radiation
2. Overspeed
3. Sensor failure
4. Instrument failure
5. Low battery

**DETECTORS:**

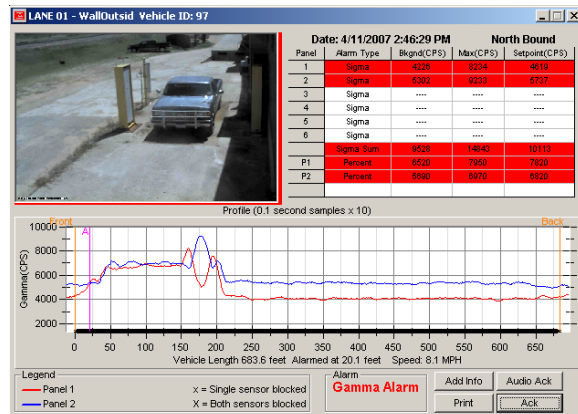
- Size: 3500 cubic inches of EJ-200 plastic scintillator (4 each with system)
- Detector has two PMTs (an increase in efficiency of 30% over one PMT)
- Stainless steel enclosure with aluminum door
- Enclosure dimensions: 82"(208cm)H X 24.5"(62cm)W X 9"(23cm)D
- Weight: 650 pounds (295kg) per detector

**INCLUDED ACCESSORY:**

- Remote light indicators with reset button and 100' cable

**OPTIONAL ACCESSORIES:**

- Strobe/horn assembly
- External video camera in  
weatherproof enclosure  
(each system can support one  
camera per lane)
- Detector stand set



Vehicle Profile